

6177100

6177100A 6177100G

XXpol | 65° Az | 18.0 / 18.0 dBi | 0-12° / 0-12° | 1394 x 265 x 114 mm

- Twin single band antenna, dual polarisation, 4 connectors
- Wide range of electrical tilt, variable 0-12° on each antenna
- MET and RET versions, AISG1.1 or 3GPP/AISG2.0
- Fully internal RET control based on our patented technologies

Ordering Options	Model Number
Manual Electrical Tilt Antenna	6177100
Remote Electrical Tilt Antenna AISG1.1	6177100A
Remote Electrical Tilt Antenna 3GPP/AISG2.0 with an MDCU RET Actuator	6177100G

Access Ports Description (Connectors)
The antenna has 4 connectors located at the bottom face. See image on the following page.

Y1	Ultra Wide Band	1710-2690 MHz LEFT Ports	(2x) 7/16-DIN Female Long Neck
Y2	Ultra Wide Band	1710-2690 MHz RIGHT Ports	(2x) 7/16-DIN Female Long Neck

Electrical Characteristics (General)
The antenna contains two radiating arrays housed in a single mechanical structure.

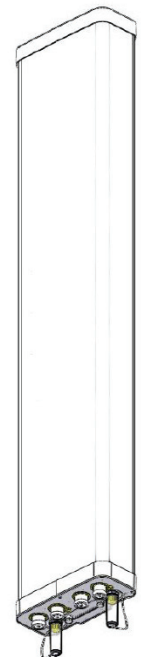
Isolation Between Arrays > 30 dB

Electrical Characteristics	Y1 & Y2
Frequency Bands	1710...1880...2170...2690 MHz
Gain	16.9...17.2...17.6...18.0 dBi
Input Impedance	50 ohms
VSWR	< 1.5
Polarisation	±45°
Horizontal Beamwidth (-3 dB)	65°
Vertical Beamwidth (-3 dB)	6°
Electrical Downtilt Range	0-12°
Isolation Between Ports	> 30 dB
Upper Sidelobe Rejection (20° sector above main beam)	> 18 dB
Null Fill (First Null Below Main Beam)	< 18 dB Typical
Front-to-Back Ratio	> 30 dB
Maximum Power (Per Port)	160 W
Intermodulation 3rd Order for 2x20W Carriers	< -110 dBm

Electrical Downtilt Control
Electrical downtilt for each band can be controlled separately. Tilt indicator(s) are covered by removable transparent cap(s).

Manual Electrical Tilt (MET) Control	A coloured knob at the end of the tilt indicator allows change of the tilt without need of a tool. The knob colour is identical to the corresponding connector ring colour. To access the knob, remove the cap by turning it counter-clockwise. It is re-installed by opposite rotation. Do not remove the transparent cap(s) from the antenna.	
Remote Electrical Tilt (RET) Control	The remote control of the electrical tilt is managed by a Multi-Device Control Unit (MDCU) inserted in the bottom of the antenna. A single actuator individually controls the tilt of each band (no need for daisy chain cables between the bands). This module does not add any additional length to the antenna. For RET control, the transparent caps must be in place and locked. The tilt angle indicators always remain visible and the antenna still has manual tilt control (manual override).	
RET Module Part Number (one per antenna)	MDCU-A0000	for AISG1.1 protocol (one unit included in 6177100A)
	MDCU-G0000	for 3GPP/AISG2.0 protocol (one unit included in 6177100G)

Environmental	
Operating Temperature Range	-40° C to +60° C
Environmental	ETS 300 019
RoHS Compliant	Yes



Several patents pending regarding this product. Quoted performance parameters are provided to offer typical, peak or range values only and may vary as a result of normal testing, manufacturing and operational conditions. Extreme operational conditions and/or stress on structural supports is beyond our control. Such conditions may result in damage to this product. Improvements to products may be made without notice.

6177100

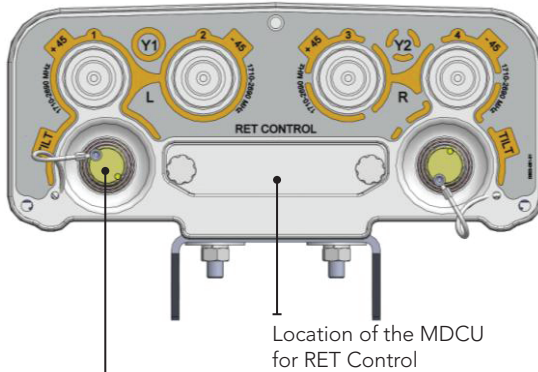
6177100A 6177100G

XXpol | 65° Az | 18.0 / 18.0 dBi | 0-12° / 0-12° | 1394 x 265 x 114 mm

Mechanical Characteristics					
Dimensions		Height: 1394 mm Width: 265 mm Depth: 114 mm			
Weight		13 kg (excluding mounting accessory)			
Shroud		Outdoor Plastic, Grey RAL7035			
Wind Speed		Operational: 160 km/hr Survival: 200 km/h			
Wind Load (EN1991-4-1)	at 150 km/h	Frontal: 420 N	Lateral: 270 N	Rear: 455 N	
	at 160 km/h	Frontal: 478 N	Lateral: 307 N	Rear: 518 N	
Mounting Kit Options		Part Number	Weight		
All mounting bracket kits are ordered separately unless otherwise indicated.					
Brackets for pole Ø48 to Ø115 mm (delivered as standard)		0900181/00	3.4 kg		
Brackets for pole Ø70 to Ø150 mm (optional)		0900182/00	3.9 kg		
Kit to add mechanical tilt (0°-10°) to above brackets (optional)		0900397/00	3.0 kg		
Wall mounting brackets are available upon request.					

Packaging
Carton Box
1.61 x 0.365 x 0.23 m
0.135 m ³
23 kg
Includes 0900181/00 Kit

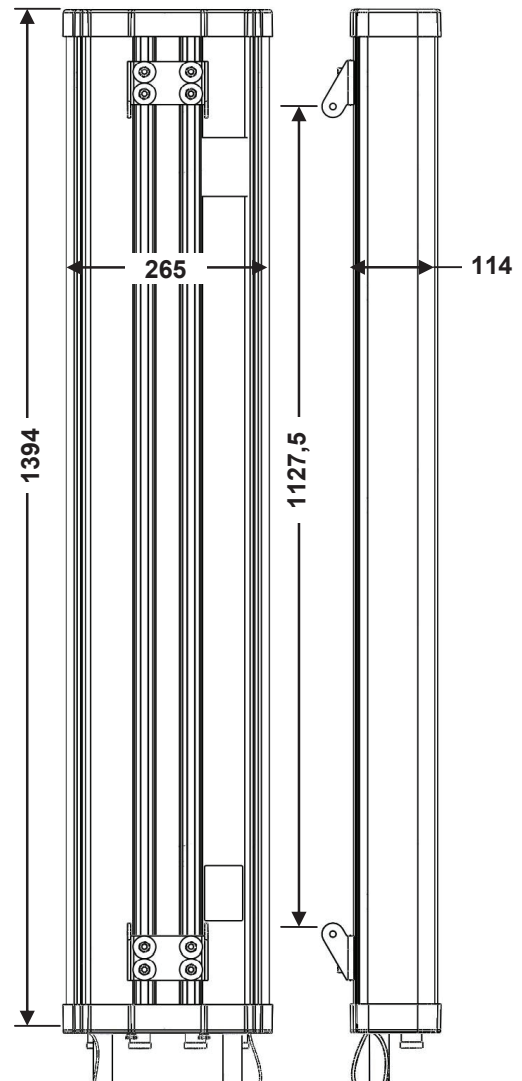
Bottom View of Antenna



Tilt indicators covered by transparent caps. Manual adjustment is accessed by removing the caps. Knob colours are the same as the connectors.

- Y1 1710-2690 MHz
- Y2 1710-2690 MHz

Dimensions (in mm)



Installation



In order to operate RET control, the transparent caps covering the tilt adjustment indicators must be engaged and locked. Do not cut them from the antenna.

Always attach the antenna by the two mounting points.

Do not install the antenna with the connectors facing upward.

Several patents pending regarding this product. Quoted performance parameters are provided to offer typical, peak or range values only and may vary as a result of normal testing, manufacturing and operational conditions. Extreme operational conditions and/or stress on structural supports is beyond our control. Such conditions may result in damage to this product. Improvements to products may be made without notice.