

## Features:

- Dual Unit In a Single Box
- Combines Two Blocks Within 1800MHz Band
- Very Low Loss, < 0.6dB Typical
- High TX Isolation  $\geq 30$ dB Under All Conditions
- DC and AISG Pass Through
- Extremely Compact
- Sealed to IP67 for Indoor or Outdoor Use

## Filter Specifications

Passband BTS1A / BTS1B  
 Passband BTS2A / BTS2B  
 Cross Over Point BTS1/BTS2

5-20MHz block factory tuneable within 1800MHz band  
 Factory Tuneable to any block size within 1800MHz band  
 Factory Tuneable within 1800MHz band

## Uplink (RX) Specifications

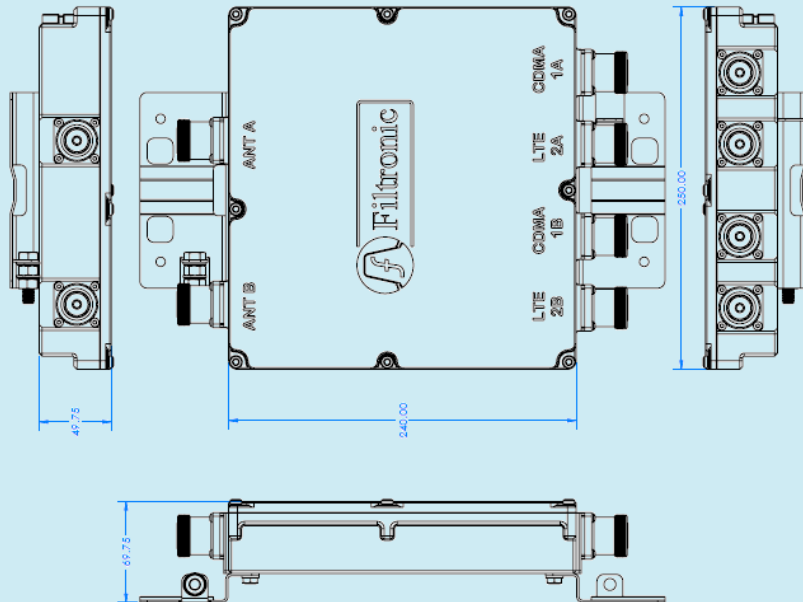
Insertion Loss  
 BTS1A to ANTA, BTS1B to ANTB  
 BTS2A to ANTA, BTS2B to ANTB  
 Return Loss, all ports

< 0.65dB, 0.55dB typical  
 < 0.65dB, 0.55dB typical  
 > 18dB, 20dB typical

## Downlink (TX) Specifications

Insertion Loss  
 BTS1A to ANTA, BTS1B to ANTB  
 BTS2A to ANTA, BTS2B to ANTB  
 Return Loss, all ports  
 IMD in RX Band  
 Input Power  
 Power Handling

< 0.65dB, 0.55dB typical  
 < 0.65dB, 0.55dB typical  
 > 18dB, 20dB typical  
 > 160dBc (2 x 43dBm tones)  
 > 150W RMS  
 2:1 Antenna VSWR, +50 °C case temp and 2500m altitude



## BTS to BTS Isolation

BTS1A to BTS2A / BTS1B to BTS2B > 25dB in RX Band, > 30dB in TX Band

## Configuration Example

Passband BTS1A / BTS1B

1860.1 to 1880.1MHz TX, 1765.1 to 1785.1MHz RX

Passband BTS2A / BTS2B

1805.1 to 1825.1MHz TX, 1710.1 to 1730.1MHz RX

## DC and AISG

AISG Path

BTS2A/B to ANT A/B

Communications Band

2.176MHz AISG

AISG Band Return Loss

> 20dB

DC

< 2.5 A, < 32 V

## Mechanical

Connectors

6 x 7/16 DIN Female, Long Neck

Dimensions

247 x 250 x 50 mm

Weight

5.2kg (11.5 lbs), inc brackets

Colour

Light grey powder coat

Mounting arrangements

Rack, wall or pole

## Environmental

Operating Temp (°C)

-40 to +50

Altitude

< 2500 m

Ingress Protection

IP67

Lightning Protection

IEC 61312-1

### EMEA

Filtronic Wireless Ltd.  
3 Airport West  
Lancaster Way  
Yeadon  
United Kingdom  
+44 113 220 0000

### Americas

Filtronic Wireless Inc.  
700 Marvel Rd  
Salisbury  
MD 21801  
United States of America  
+1 410 202 8811